



Applies To: **2008 Accord L4 4-door** – From VIN 1HGCP2...8A000001 thru VIN 1HGCP2...8A108149
2008 Accord V6 4-door – From VIN 1HGCP3...8A000001 thru VIN 1HGCP3...8A050850

June 27, 2008

Driver's Door Intermittently Won't Open

SYMPTOM

The driver's door does not open when the inner or outer handle is pulled. The door usually opens if the handle is released and pulled again.

PROBABLE CAUSE

The sheet metal reinforcement for the door latch mounting is bent. The bent metal applies pressure on the latch, which interferes with latch operation.

CORRECTIVE ACTION

Straighten the sheet metal reinforcement so that it lies flat against the door skin.

WARRANTY CLAIM INFORMATION

In warranty: The normal warranty applies.

Operation Number: 8150A5

Flat Rate Time: 0.8 hour

Failed Part: P/N 67050-TA0-A90ZZ
H/C 8661977

Defect Code: 00201

Symptom Code: 00101

Template ID: 08-047A

Skill Level: Repair Technician

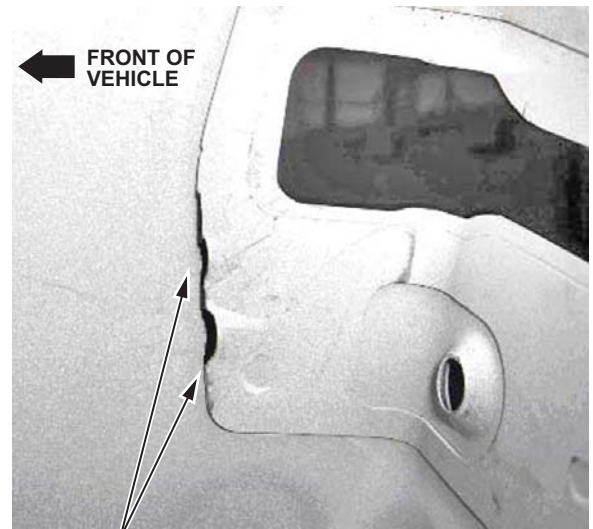
REPAIR PROCEDURE

1. Remove the driver's door latch:
 - Refer to pages 20-23 and 20-24 in the *2008–2009 Honda Accord Service Manual*, or
 - Online, enter keyword **LATCH**, and select from **Front Door Latch Replacement** from the list.

NOTE: It is not necessary to remove the outer handle rod, the latch cable, or the inner handle cable from the latch assembly.

2. Inspect the sheet metal reinforcement surrounding the door latch opening for any bending or wrinkling.

VIEW FROM INSIDE THE DOOR



BENT/WRINKLED AREA

3. Insert a pair of angled needle-nose pliers through the door latch opening so that you are holding the bent area of the reinforcement and the door skin between the jaws of the pliers. Carefully squeeze the pliers to flatten the reinforcement against the door skin.

NOTE: Apply protective tape to the door and the pliers as needed to prevent paint damage.



Sheet metal
should lay flat.

4. Reinstall the latch in the reverse order of removal.
5. Verify that the door latch, the door lock, and the inner and outer door handles operate normally.