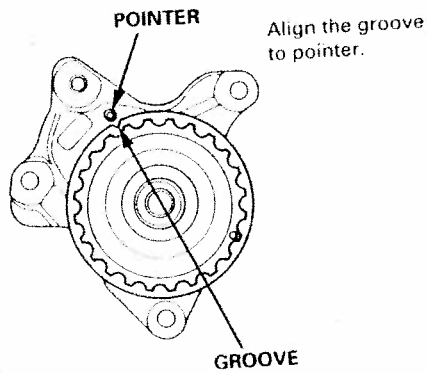
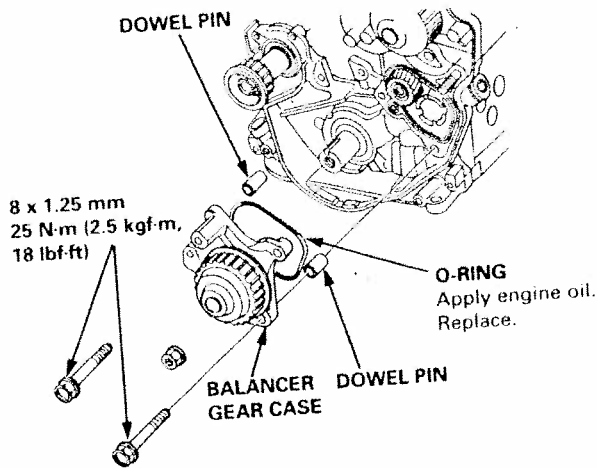


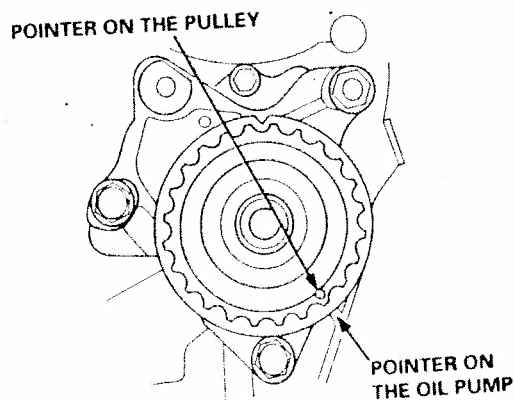
Crankshaft and Balancer Shafts Installation (cont'd)

16. Install the balancer gear case to the oil pump.

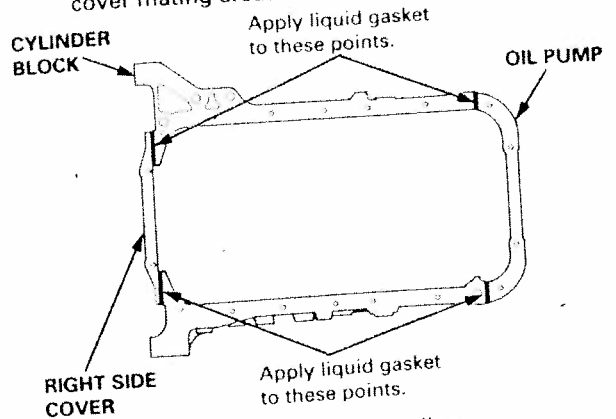
NOTE: Align the groove on the pulley edge to the pointer on the gear case while holding the rear balancer with 6 x 100 mm bolt, then install the gear case.



17. Check alignment of pointers after installing the gear case.



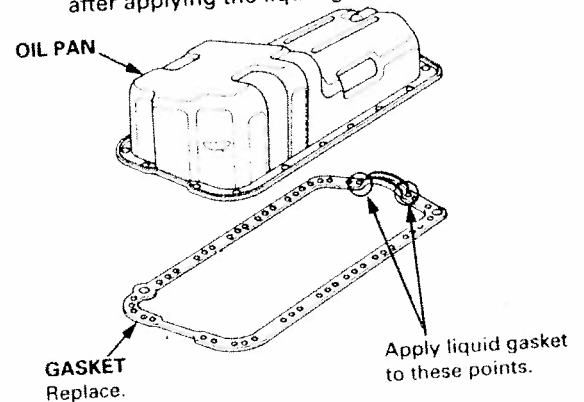
18. Apply liquid gasket on oil pump and right side cover mating areas as shown below.



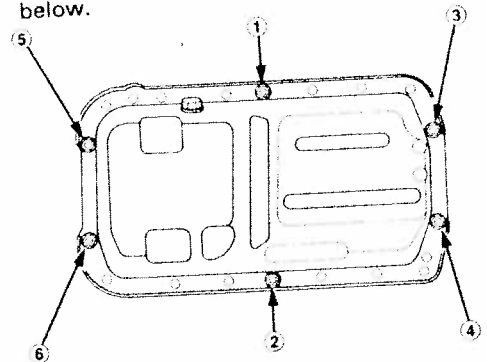
19. Install the oil pan gasket and oil pan.

NOTE:

- Use a new oil pan gasket.
- Install the oil pan no more than five minutes after applying the liquid gasket.



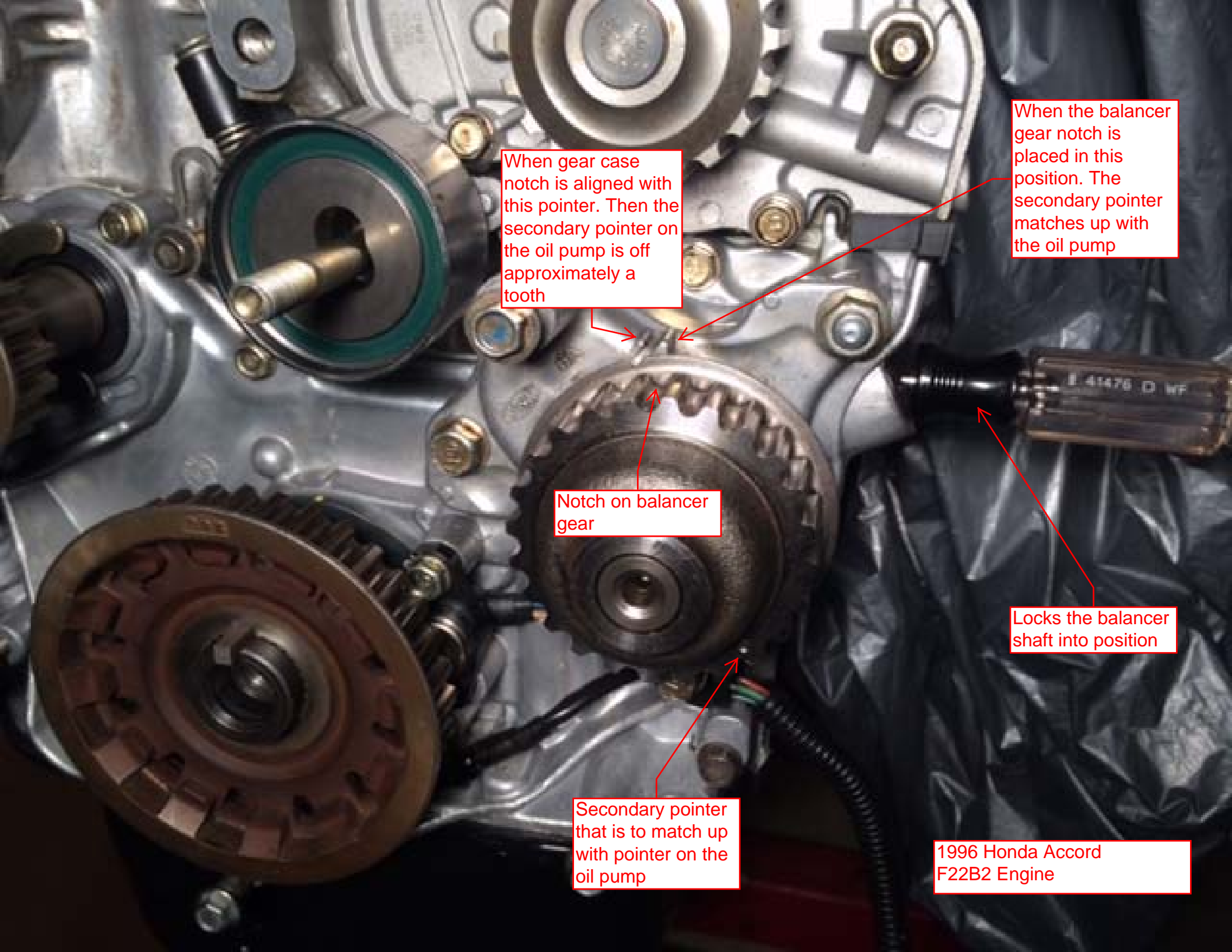
20. Tighten the nuts finger-tight at six points as shown below.



21. Tighten all bolts and nuts, starting from nut ① clockwise in three steps.

NOTE: Excessive tightening can cause distortion of oil pan gasket, and oil leakage.

Torque: 14 N-m (1.4 kgf-m, 10 lbf-ft)



When gear case notch is aligned with this pointer. Then the secondary pointer on the oil pump is off approximately a tooth

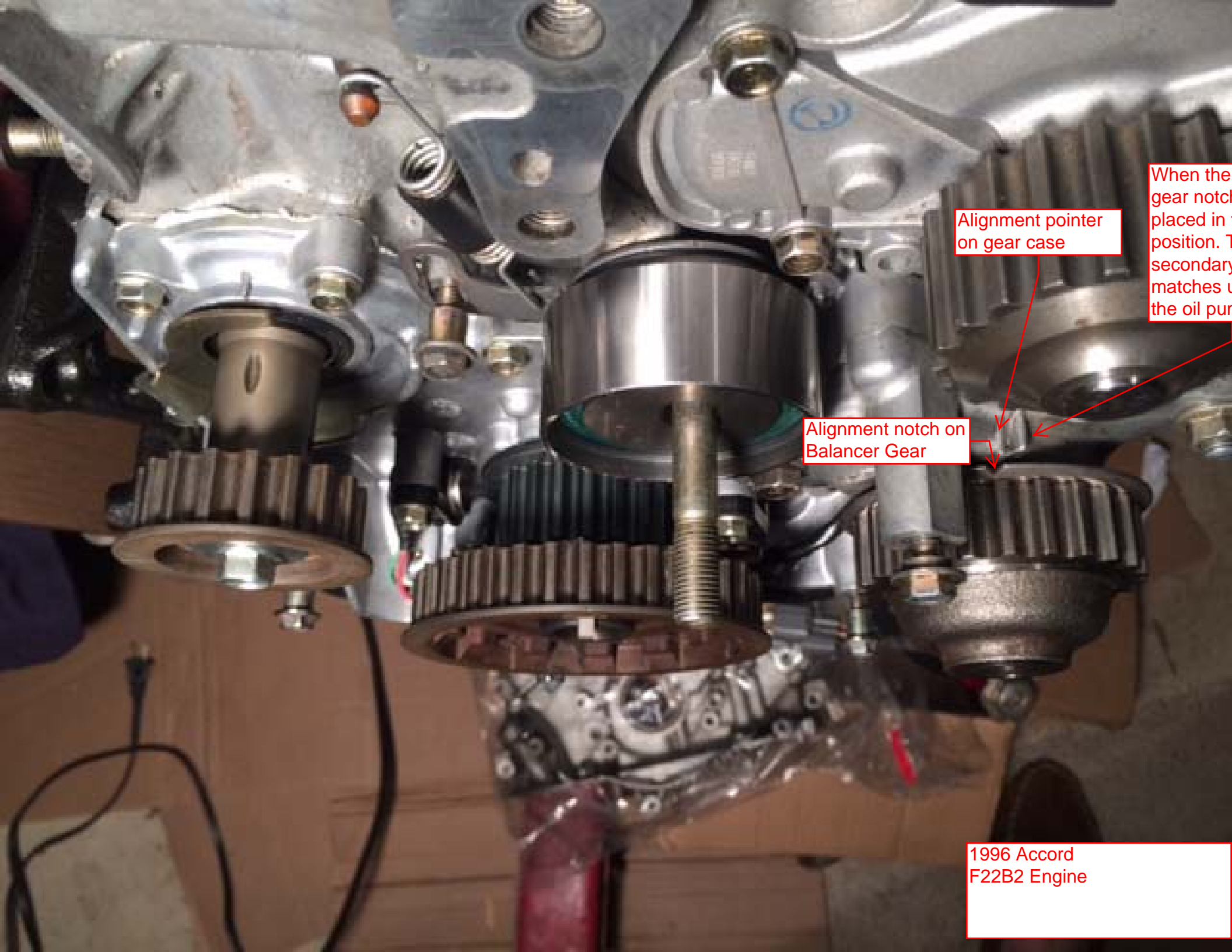
When the balancer gear notch is placed in this position. The secondary pointer matches up with the oil pump

Notch on balancer gear

Locks the balancer shaft into position

Secondary pointer that is to match up with pointer on the oil pump

1996 Honda Accord F22B2 Engine



Alignment pointer on gear case

Alignment notch on Balancer Gear

When the gear notch is placed in this position, the secondary matches up with the oil pump

1996 Accord
F22B2 Engine

1996 Accord
F22B2 Engine

Locks the balancer
shaft in place

Secondary pointer
on gear case

Pointer on oil pump

1996 Accord
F22B2 Engine

