



DTC P0340: CMP Sensor A No Signal

1. Turn the ignition switch ON (II).
2. Clear the DTC with the HDS.
3. Start the engine.
4. Check for Temporary DTCs or DTCs with the HDS.

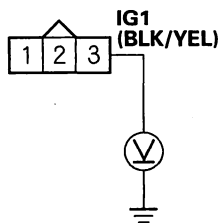
Is DTC P0340 indicated?

YES—Go to step 5.

NO—Intermittent failure, system is OK at this time. Check for poor connections or loose terminals at CMP sensor A and the ECM/PCM. ■

5. Turn the ignition switch OFF.
6. Disconnect the CMP sensor A 3P connector.
7. Turn the ignition switch ON (II).
8. Measure voltage between CMP sensor A 3P connector terminal No. 3 and body ground.

CMP SENSOR A 3P CONNECTOR



Wire side of female terminals

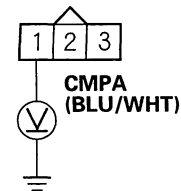
Is there battery voltage?

YES—Go to step 9.

NO—Repair open in the wire between the No. 18 ACG (15 A) fuse in the under-dash fuse/relay box and CMP sensor A, then go to step 18.

9. Measure voltage between CMP sensor A 3P connector terminal No. 1 and body ground.

CMP SENSOR A 3P CONNECTOR



Wire side of female terminals

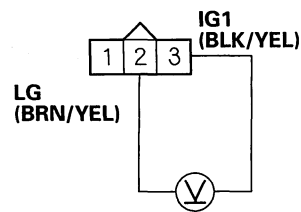
Is there about 5 V?

YES—Go to step 10.

NO—Go to step 11.

10. Measure voltage between CMP sensor A 3P connector terminals No. 2 and No. 3.

CMP SENSOR A 3P CONNECTOR



Wire side of female terminals

Is there battery voltage?

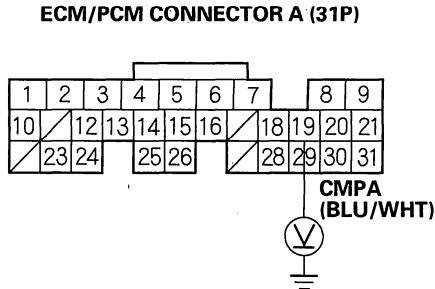
YES—Go to step 16.

NO—Repair open in the wire between CMP sensor A and G101, then go to step 18.

(cont'd)

DTC Troubleshooting (cont'd)

11. Measure voltage between ECM/PCM connector terminal A19 and body ground.

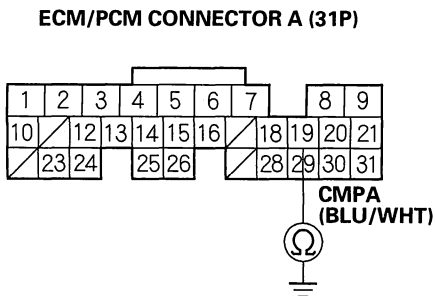


Is there about 5 V?

YES—Repair open in the wire between the ECM/PCM (A19) and CMP sensor A, then go to step 18.

NO—Go to step 12.

12. Turn the ignition switch OFF.
13. Jump the SCS line with the HDS.
14. Disconnect ECM/PCM connector A (31P).
15. Check for continuity between ECM/PCM connector terminal A19 and body ground.



Is there continuity?

YES—Repair short in the wire between the ECM/PCM (A19) and CMP sensor A, then go to step 18.

NO—Go to step 24.

16. Turn the ignition switch OFF.
17. Replace CMP sensor A (see page 11-297).
18. Reconnect all connectors.
19. Turn the ignition switch ON (II).
20. Reset the ECM/PCM with the HDS.
21. Do the ECM/PCM idle learn procedure (see page 11-316).
22. Start the engine.
23. Check for Temporary DTCs or DTCs with the HDS.

Are any Temporary DTCs or DTCs indicated?

YES—If DTC P0340 is indicated, check for poor connections or loose terminals at CMP sensor A and the ECM/PCM, then go to step 1. If any other Temporary DTCs or DTCs are indicated, go to the indicated DTC's troubleshooting.

NO—Troubleshooting is complete. ■

24. Update the ECM/PCM if it does not have the latest software, or substitute a known-good ECM/PCM (see page 11-6).
25. Check for Temporary DTCs or DTCs with the HDS.

Are any Temporary DTCs or DTCs indicated?

YES—If DTC P0340 is indicated, check for poor connections or loose terminals at CMP sensor A and the ECM/PCM, then go to step 1. If any other Temporary DTCs or DTCs are indicated, go to the indicated DTC's troubleshooting.

NO—If the ECM/PCM was updated, troubleshooting is complete. If the ECM/PCM was substituted, replace the original ECM/PCM (see page 11-227). ■