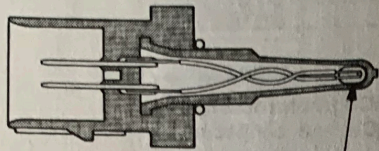
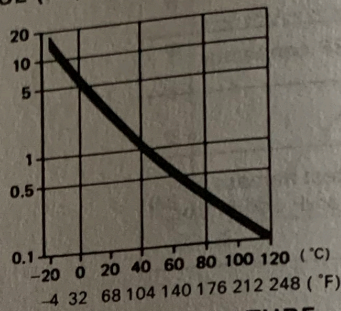


10 Self-diagnosis Check Engine light indicates code 10: A problem in the Intake Air Temperature (TA) Sensor circuit.
 The TA sensor is a temperature dependant resistor (thermistor). The resistance of the thermistor decreases as the intake air temperature increases as shown below.



THERMISTOR

RESISTANCE (kΩ)



INTAKE AIR TEMPERATURE

10

- Check Engine light has been reported on.
- With jumper wire installed (page 11-18), CODE 10 is indicated.

Do the ECU Reset Procedure (page 11-19).

Turn the ignition switch ON.

Is Check Engine light on and does it indicate CODE 10?

NO

Intermittent failure, system is OK at this time (test drive may be necessary).
 Check for poor connections or loose wires at TA sensor C124 and C311 (located at left shock tower).

YES

Turn the ignition switch OFF.

Disconnect the 2P connector from the TA sensor.

Measure resistance between the 2 terminals on the TA sensor.

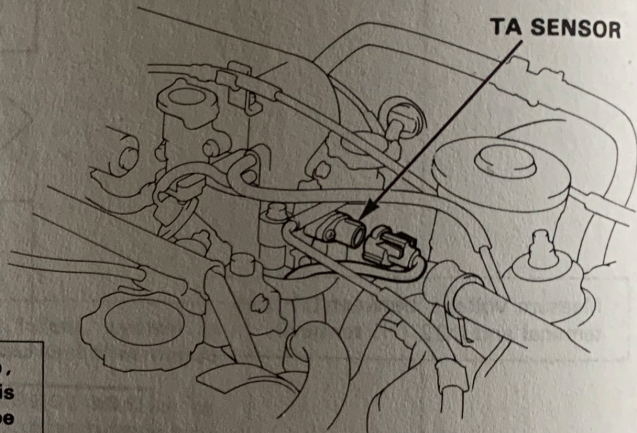
Is there 1-4 kΩ?

NO

Replace TA sensor.

YES

(To page 11-53)



TA SENSOR